

W160 Anti-theft System

FEATURES

- Signal processing technology adopts the world's top ARM processors, the core algorithms are independently developed, and the anti-interference ability and inspection distance are in the leading domestic level.
- Super detection distance. When there is without interference, DR soft label channel distance can reach 1.2-1.4m, 39 magnetic rod channel distance can reach 2.4m-2.8m.;
- Multiple working modes can be selected and can be completely set and transformed through the remote control, which is easy to operate (detailed operation will be introduced later). ;
- Each anti-theft door host can be carried with two auxiliary machines, which can alarm independently and record the number of alarms automatically. ;
- The anti-theft system of the whole acoustic magnetic system runs smoothly and has high detection rate, almost zero false alarm. It is not shielded by tinfoil, and has strong anti-interference ability. Now it is widely used in retail stores, supermarkets, clothing boutiques and other places.

DIMENSIONS

Height: 1530mm

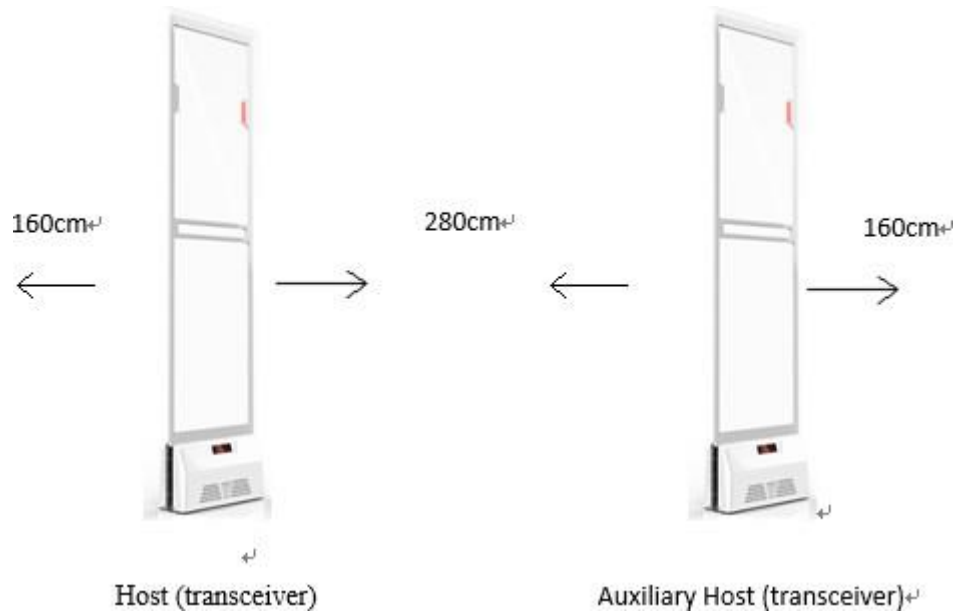
Width : 400mm

Depth : 200mm

Weight::15kgs



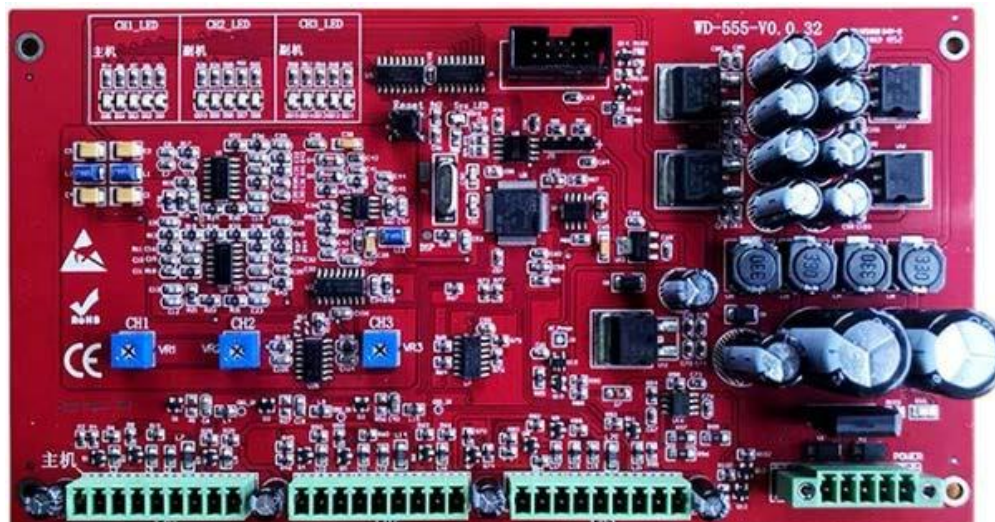
PERFORMANCE



one host+one auxiliary host (both independently transceivers)

One host + one auxiliary host compose an opposite machine. The host transmitting board is connected to the mainboard CH1 terminal, the auxiliary host transmitting board is connected to the mainboard CH2 terminal.

Main Board



APPLICATION

